

WASHDOWN & SILT SEPARATORS

These units can be used in areas such as car wash and other cleaning facilities that discharge directly into a foul drain, which feeds to a municipal treatment facility. If emulsifiers are present the discharge must not be allowed to enter a Class I or Class II unit.

Typical applications include:

- Car washes
- Tool hire depots
- Truck cleansing
- Construction compounds cleansing points

Features

- Light and easy to install
- Inclusive of silt storage volume
- Fitted inlet/outlet connectors
- Vent points within necks
- Extension access shafts for deep inverts
- Maintenance from ground level

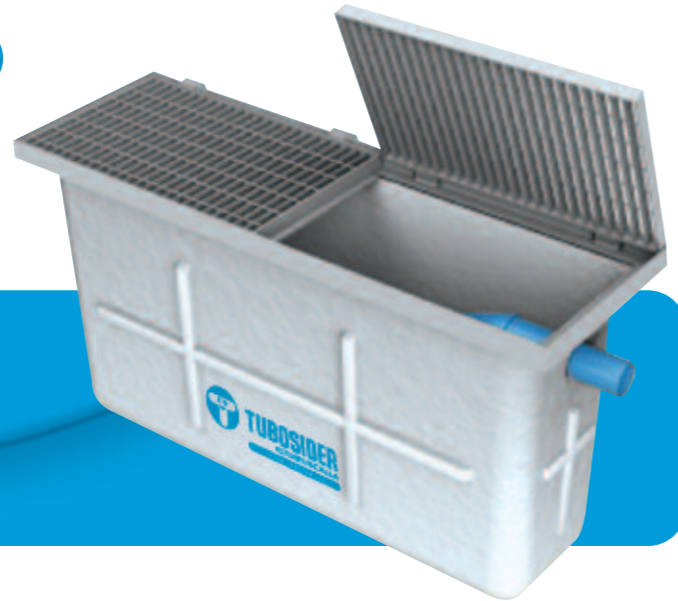


CAR WASH SILT TRAP

This unit is designed for use before a separator in car wash applications to ensure effective silt removal.

Features

- Galvanised heavy duty cover
- Light and easy to install
- Maintenance from ground level



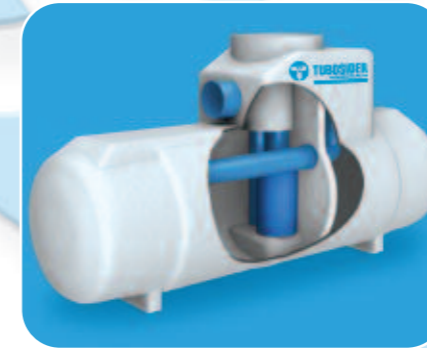
MORE INFORMATION

Please contact us for advice on the use and choice of separators and the standards to which they operate - plus more information on all the units featured here including specification, performance and installation.

Tubosider United Kingdom Ltd
10 Sutton Fold Industrial Estate, Off Lancots Lane, Sutton, St Helens, WA9 3EX
Telephone: 01744 452900 Fax: 01744 452949 Email: sales@tubosider.co.uk
Website: www.tubosider.co.uk



SEPARATORS



TUBOSIDER
GRUPPO RUSCALLA
UNITED KINGDOM LTD

Tubosider has a range of **BYPASS SEPARATORS** and **FULL RETENTION SEPARATORS** to deal with all contaminants.

INTRODUCTION

Where surface water runs off from large hard standing areas such as car parks, industrial estates, commercial centres, road schemes and garage forecourts, it is vital to remove contaminants such as petrol, oil, grease and silt from water run-off before they are discharged into the watercourse.

The environment regulators in England and Wales, Scotland and Northern Ireland have published guidance which offers a range of means of dealing with pollution both at source and at the point of discharge from site. These techniques are known as Sustainable Drainage Systems (SUDS).

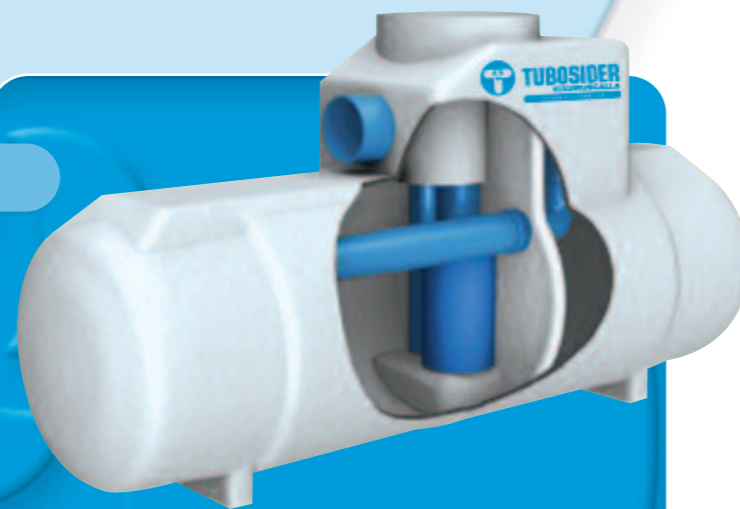
Tubosider has a range of bypass separators and full retention separators to deal with all such contaminants. Furthermore, we have developed a high performance unit unlike many other designs on the market - a compact format that can accommodate any variation and size of pipe work without affecting contaminant retention or separator performance. All our separators conform to Environment Agency PPG3 requirements for wastewater treatment.

BYPASS SEPARATORS

Bypass separators are used when it is an acceptable risk not to provide full treatment, for very high flows, and where there is little risk of a large spillage and heavy rainfall occurring at the same time. For example:

- Surface car parks
- Roadways
- Lightly contaminated commercial areas

Class I bypass separators are designed to achieve a concentration of 5mg/litre of oil under standard test conditions. Class II bypass separators are designed to achieve a concentration of 100mg/litre of oil under standard test conditions.



Features

- Light and easy to install
- Inclusive of silt storage volume
- Fitted inlet/outlet connectors
- Vent points within necks
- Oil alarm system available (required by BS EN 858-1 and PPG3)
- Extension access shafts for deep inverts
- Maintenance from ground level

FULL RETENTION SEPARATORS

Full retention separators treat the full flow that can be delivered by the drainage system, normally equivalent to the flow generated by a rainfall intensity of 65mm/hr. On large sites, some short term flooding may be an acceptable means of limiting the flow rate and hence the size of full retention systems.

Full retention separators are used in high risk spillage areas such as:

- Fuel distribution depots
- Vehicle workshops
- Scrap yards



Features

- Light and easy to install
- 3-30 l/sec range independently tested and performance sampled, certified by the BSI
- Class I and Class II designs
- Inclusive of silt storage volume
- Fitted inlet/outlet connectors
- Oil alarm system available
- Vent points within necks
- Extension access shafts for deep inverts
- Maintenance from ground level

FORECOURT SEPARATORS

Forecourt separators are full retention separators specified to retain on site the maximum spillage likely to occur on a petrol filling station. They are required for both safety and environmental reasons and will treat spillages occurring during vehicle refuelling and road tanker delivery.

The size of the separator is increased in order to retain the possible loss of the contents of one compartment of a road tanker, which may be up to 7,600 litres.



Features

- Light and easy to install
- Inclusive of silt storage volume
- Fitted inlet/outlet connectors
- Vent points within necks
- Extension access shafts for deep inverts
- Maintenance from ground level
- Class I and Class II design
- Oil storage volume
- Coalescer (Class I unit only)
- Automatic closure device
- Oil alarm system available