

PUMPING STATIONS



Tubosider manufactures and supplies a full range of stormwater attenuation tanks, bolted plate and liner plate structures, highway barrier systems and flow regulators.



Tubosider United Kingdom Ltd

10 Sutton Fold Industrial Estate, Off Lancots Lane, Sutton, St Helens, WA9 3EX

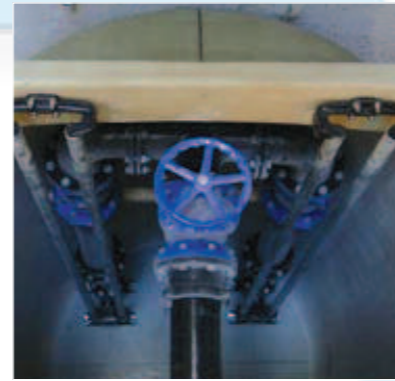
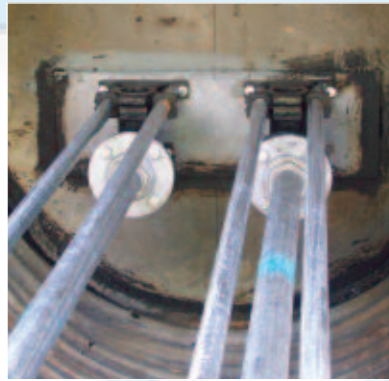
Telephone: 01744 452900

Fax: 01744 452949

Email: sales@tubosider.co.uk

Website: www.tubosider.co.uk





Tubosider offers a comprehensive range of foul and surface water pumping stations for use with its stormwater management tanks and pipe systems.

INTRODUCTION

Each pumping station is designed to suit individual requirements and is fitted with high quality submersible pumps, controls and pipework.

We provide full assistance at the design stage with the sizing of pumping stations, rising mains and electricity supply requirements in order to achieve the most cost effective pumping solution for each project.



FUNCTION

Surface water and foul pumping stations are designed to form an integral part of the stormwater retention tank, making the construction and installation of a separate pumping station completely unnecessary.

On applications where the pumped effluent contains a foul content, then the pumps can be installed as an integral part of the retention tank (having a Trenchcoat internal lining) or as a stand alone GRP package pumping station.

RANGE OF OPTIONS

Pumps are available for flow rates as small as 2 litres/second to in excess of 400 litres/second with delivery heads up to 80 metres. Pumps can be fitted with standard or explosion proof motors depending on the exact nature of the fluid to be handled.



GRP Chambers are available in a variety of diameters ranging from 0.6 metres to 2.5 metres and depths from 1.5 metres to 6 metres. As all of the pumping chambers are manufactured to order the connections can be provided to suit the site specific requirements. Fully detailed general arrangement drawings are produced for approval prior to manufacture.

CONTROLS

Automatic control of the pumps can be achieved either as standard by floatswitches or by ultrasonic level controls.

All standard control panels are equipped with:

- 🔌 mains isolator
- 🔌 hand-off-auto selector switches
- 🔌 running lamps
- 🔌 tripped lamps
- 🔌 audible and visual high level alarm
- 🔌 24V remote high level alarm terminals
- 🔌 automatic duty pump rotation
- 🔌 volt free contacts for tripped and high level alarm status

The control panels can be customised to include additional features such as hours run meters and ammeters or to operate on a multisectional basis. Telemetry dial-out units can also be fitted to the control panels to deliver a voice recorded message to a maximum of three pre-determined telephone numbers should a fault condition occur at the pumping station.

INSTALLATION

Besides supplying and designing all the equipment, Tubosider includes a full installation and commissioning service as part of the package. This is undertaken by skilled engineers with a minimum of 10 years' experience in the installation of submersible pumps and associated equipment.

All engineers are confined space entry trained and are fully equipped with gas detectors and fall arrest equipment. Job specific method statements and risk assessments are produced and submitted for approval prior to each installation.

WARRANTY & MAINTENANCE

All Tubosider pumps and associated equipment are supplied with a 12 month parts and workmanship warranty.

We are also pleased to offer a maintenance contract for all our pumping stations. Each maintenance contract can be specifically tailored to suit each customer's exact requirements.